



NORTH CENTRAL REGION  
WATER NETWORK

# Welcome to *The Current*, the North Central Region Water Network's Speed Networking Webinar Series

## Source Water Protection: 2PM CT

1. Submit your questions for presenters via the Q&A panel. There will be a dedicated Q&A session following the last presentation. The Q&A panel can be found via the Q&A icon at the bottom of the webinar screen.
2. If you are experiencing technical issues or have questions about the North Central Region Water Network or *The Current* Webinar Series, please use the chat feature. The chat feature is accessible via chat icon at the bottom of the webinar screen.
3. A phone-in option can be accessed by clicking the up arrow on the mute icon and clicking 'Switch to Phone Audio'.

This session will be recorded and available at [northcentralwater.org](http://northcentralwater.org).

Follow us:



Join our Listserv: [join-ncrwater@lists.wisc.edu](mailto:join-ncrwater@lists.wisc.edu)

[northcentralwater.org](http://northcentralwater.org)



## Today's Presenters:

- **Sylvia Malm**, Senior Advisor for Source Water Protection, Ground Water Protection Council and Source Water Collaborative
- **Logan M. Smith**, Drinking Water Protection Coordinator, Watershed Management Section, Kansas Department of Health & Environment
- **Ruth Kline-Robach**, Outreach Specialist, Institute of Water Research & Department of Community Sustainability, Michigan State University







## Sylvia Malm



Sylvia Malm, Senior Advisor for Source Water Protection, Ground Water Protection Council (GWPC), supports the national Source Water Collaborative to promote opportunities for source water protection, and leads the Collaboratives Network, over 30 state, watershed, and local collaboratives across the country.

Sylvia was the Source Water Protection Team Leader for over 10 years at the US Environmental Protection Agency's Office of Ground Water and Drinking Water. While at EPA, she developed a toolkit to facilitate source water professionals' work with USDA and conservation districts and worked with FFA to create water quality lessons for high school students.

Sylvia has an MA in public policy from Duke University, MEd from Boston University, and BA from Brandeis University. Sylvia grew up on a farm in Lebanon County, PA and is a member of the NRCS Virginia State Technical Committee.



# Update from the Source Water Collaborative

*Sylvia Malm*  
*Ground Water Protection Council*  
*North Central Region Water*  
*Network*  
*April 13, 2022*

# ABOUT ASDWA AND GWPC



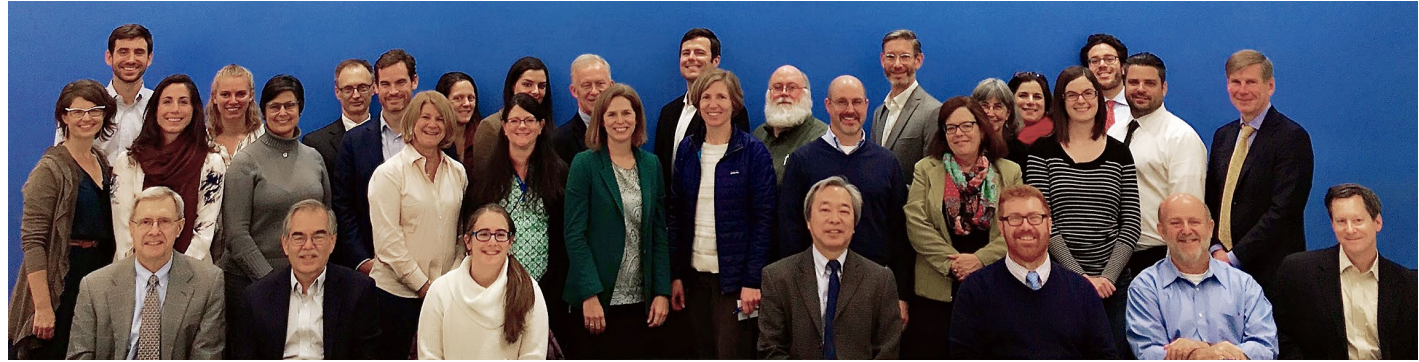
- **Members:** State Drinking Water Program Administrators
- **Mission:** ASDWA provides information, opportunities, and guidance to state and federal leaders and partners in the drinking water sector to protect public health and sources of drinking water.



- **Members:** State Groundwater Regulatory Agencies
- **Mission:** GWPC provides an important forum for communication and research to promote the protection and conservation of groundwater resources for all beneficial uses, as a critical component of the ecosystem.



Now 30 Members!



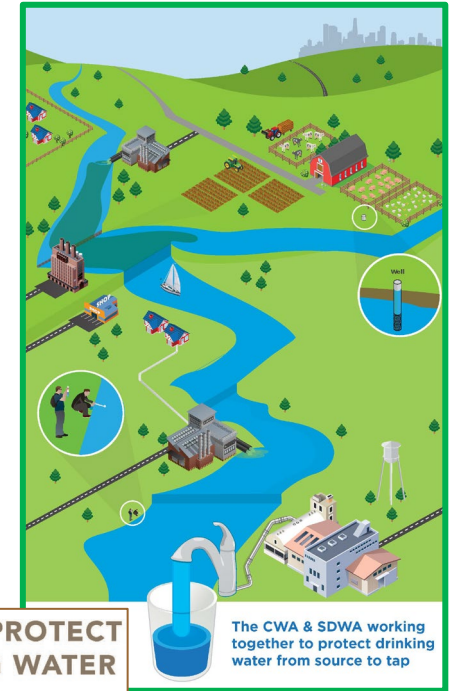
American Planning Association	American Rivers	American Water Works Association	Association of Clean Water Administrators	Association of Metropolitan Water Agencies	Association of State and Territorial Health Officials	Association of State Drinking Water Administrators
Clean Water Action/ Clean Water Fund	Environmental Finance Center Network	Ground Water Protection Council	National Association of Conservation Districts	National Association of Counties	National Association of State Foresters	National Environmental Services Center
National Ground Water Association / Groundwater Foundation	National Rural Water Association	North American Lake Management Society	River Network	Rural Community Assistance Partnership	Smart Growth America	Soil & Water Conservation Society
The Trust for Public Land	USDA - FSA USDA - NRCS	U.S. EPA	U.S. Endowment for Forestry & Communities	U.S. Forest Service (Northeastern)	U.S. Geological Survey	Water Systems Council

[www.sourcewatercollaborative.org](http://www.sourcewatercollaborative.org)

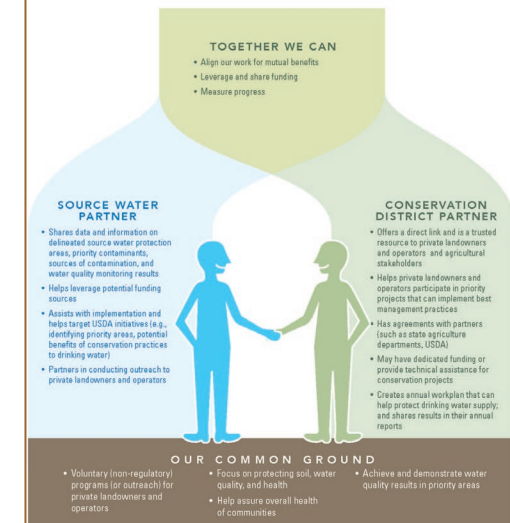


- Agricultural collaboration toolkits:
  1. Tips for SWP partners work with Conservation Districts
  2. Tips for state SWP programs work with NRCS State Conservationists
- CWA-SDWA Infographic
- Learning Exchange
- How to Collaborate Toolkit
- Collaboratives Near You
- Guides for Planners and Local Officials
- Water Quality Lessons for 9<sup>th</sup>-12<sup>th</sup> grade

[www.sourcewatercollaborative.org](http://www.sourcewatercollaborative.org)



## COLLABORATION CAN PROTECT SOURCES OF DRINKING WATER



# Source Water Collaborative - Collaboration Toolkit

[www.SourceWaterCollaborative.org](http://www.SourceWaterCollaborative.org)

**sourcewater COLLABORATIVE** HOME | ABOUT US | QUICK TOOLS | CALL TO ACTION | COLLABORATIVES NEAR YOU

**LEARNING EXCHANGE** [LEARN MORE »](#)

A NEW INFORMATION SHARING PLATFORM FOR SOURCE WATER PROTECTION

**THE SOURCE WATER COLLABORATIVE CAN HELP YOU**

- Assess & Protect Drinking Water Sources
- Connect With Others**
- Respond To An Emergency
- Learn About Source Water Collaborative

**I WANT TO CONNECT WITH**

- The Learning Exchange
- Conservationists
- Land Use Planners
- Local Officials
- Other Drinking Water Utilities And Labs
- Use The Clean Water Act To Protect Drinking Water
- How To Collaborate Toolkit**
- Find A Partner
- Educational Materials For Agriculture

**sourcewater COLLABORATIVE** ABOUT US | QUICK TOOLS | CALL TO ACTION | COLLABORATIVES NEAR YOU

**COLLABORATION TOOLKIT:**  
HOW TO BUILD AND MAINTAIN EFFECTIVE PARTNERSHIPS TO PROTECT SOURCES OF DRINKING WATER

The Source Water Collaborative has developed this extensive "How-to Collaborate" Toolkit to help others initiate or enhance partnerships to protect drinking water sources. This Toolkit is part of the SWC's ongoing efforts to help foster local, state and regional/watershed source water collaboratives.

Effectively addressing drinking water contamination often requires working with key partners, across organizational and jurisdictional boundaries. Designed to meet a broad array of needs, this Toolkit provides helpful tips, sample materials, and thoughtful resources organized by each stage of collaboration, from those just getting started to mature partnerships seeking new inspiration.

Click on the map below to see state, regional, and local examples or click on the stage of your collaborative.

**BENEFITS OF USING A COLLABORATIVE APPROACH:**

- Increases recognition of need for protecting drinking water sources.
- Offers cost-effective approach rather than "going it alone."
- Aligns diverse efforts for mutual benefit (watershed protection, conservation, regulation, planning, and/or economic development).
- Brings together those with authority and influence to solve problems.
- Uses a voluntary approach while leveraging current state and federal programs.

**GET STARTED:**

Select Your Stage of Collaboration or Skip to Specific Resources

- Considering a Collaborative Effort**
- Forming a New Collaborative**
- Advancing a Developing Collaborative**
- Maintaining a Collaborative**

**SEARCH A MAP OF COLLABORATIVE EFFORTS**

[Click Here](#)

**RESOURCES**

- Funding
- Partners
- Communication
- Collaborative Structure
- Sample Materials
- Collaborative Approach
- Action Planning
- Measuring Impact



# Source Water Collaborative - Conservation Tool Kit

www.SourceWaterCollaborative.org

The screenshot displays the Source Water Collaborative website. At the top, the navigation bar includes 'HOME', 'ABOUT US', 'QUICK TOOLS', 'CALL TO ACTION', and 'COLLABORATIVES'. A prominent blue banner features the text 'LEARNING EXCHANGE' and 'A NEW INFORMATION SHARING PLATFORM FOR SOURCE WATER PROTECTION'. Below this, a grid of yellow boxes lists various resources: 'Assess & Protect Drinking Water Sources', 'Connect With Others' (circled in red), 'Respond To An Emergency', 'Other Drinking Water Utilities And Labs', 'Use The Clean Water Act To Protect Drinking Water', 'Educational Materials For Agriculture', 'The Learning Exchange', 'Conservationists' (circled in red), and 'Land'. A large white box titled 'COLLABORATION TOOLKIT: PROTECTING DRINKING WATER SOURCES THROUGH AGRICULTURAL CONSERVATION' is overlaid on the right. It contains introductory text about the toolkit's purpose and a list of benefits. Below the text, there are buttons for 'HOW TO WORK WITH CONSERVATION DISTRICTS' and 'HOW TO WORK WITH NRCS STATE CONSERVATIONISTS'. To the right of the toolkit box, a sidebar titled 'COLLABORATION TOOLKIT: HOW TO BUILD AND MAINTAIN EFFECTIVE PARTNERSHIPS TO PROTECT SOURCES OF DRINKING WATER' provides further details, including a 'GET STARTED' section with icons for 'Considering a Collaborative Effort', 'Forming a New Collaborative', 'Advancing a Developing Collaborative', and 'Maintaining a Collaborative'. A map of the United States is also present, labeled 'SEARCH A MAP OF COLLABORATIVE EFFORTS' and 'Click Here'. A 'RESOURCES' list includes 'Funding', 'Partners', 'Communication', 'Collaborative Structure', 'Sample Materials', 'Collaborative Approach', 'Action Planning', and 'Measuring Impact'.

sourcewater COLLABORATIVE

HOME | ABOUT US | QUICK TOOLS | CALL TO ACTION | COLLABORATIVES

I WANT TO CONNECT WITH

LEARNING EXCHANGE

A NEW INFORMATION SHARING PLATFORM FOR SOURCE WATER PROTECTION

THE SOURCE WATER COLLABORATIVE CAN HELP YOU

Assess & Protect Drinking Water Sources

Connect With Others

Respond To An Emergency

Learn Water

The Learning Exchange

Conservationists

Land

Other Drinking Water Utilities And Labs

Use The Clean Water Act To Protect Drinking Water

How To

Educational Materials For Agriculture

COLLABORATION TOOLKIT:  
PROTECTING DRINKING WATER SOURCES THROUGH AGRICULTURAL CONSERVATION

Are you interested in getting more agricultural conservation on the ground to help protect sources? The National Resources Conservation Service (NRCS, U.S. Department of Agriculture) State Conservationist's office. Another key set of allies is conservation districts - important partners at the local level. The National Association of Conservation Districts (NACD) recently joined the Source Water Collaborative, committing to link its members to information about the value of their work in protecting sources.

This toolkit, developed as a result of extensive collaboration between members of the Source Water Collaborative, offers a step-by-step approach. The resources inside are useful for anyone working in source water protection. If you are a conservationist, you may already know their State Conservationist or District Conservationist (NRCS) or Executive Director/Board Member (NACD), but may be looking for new ideas, to those aiming to build a successful relationship. Each toolkit was developed from NRCS and NACD, and from state and regional source water coordinators who recently completed successful projects.

Note that many successful projects rely on participation from local conservation districts and the local NRCS office. Both can bring key partners, especially producers and private landowners, to the table for project planning. Local conservation districts often have access to technical and financial resources, as well as credibility with local and state leaders. You can help you access a useful network of state and local participants. Depending on current priorities, you may be more receptive to further discussions about source water protection needs, and will contribute to the success of the project.

CLICK BELOW TO GET STARTED:

HOW TO WORK WITH CONSERVATION DISTRICTS

HOW TO WORK WITH NRCS STATE CONSERVATIONISTS

COLLABORATION TOOLKIT:  
HOW TO BUILD AND MAINTAIN EFFECTIVE PARTNERSHIPS TO PROTECT SOURCES OF DRINKING WATER

The Source Water Collaborative has developed this extensive "How-to Collaborate" toolkit to help others create or enhance partnerships to protect drinking water sources. This toolkit is part of the SMC's ongoing efforts to help foster local, state and regional watershed source water collaborations.

Effectively addressing drinking water contamination often requires working with key partners, across organizational and jurisdictional boundaries. Designed to meet a broad array of needs, this toolkit provides helpful tips, sample materials, and thoughtful resources organized by each stage of collaboration, from those just getting started to mature partnerships seeking new opportunities.

Click on the map below to see state, regional, and local examples or click on the stage of your collaboration.

BENEFITS OF USING A COLLABORATIVE APPROACH:

- Increases recognition of need for protecting drinking water sources.
- Offers cost-effective approach rather than "going it alone."
- Aligns diverse efforts for mutual benefit (watershed protection, conservation, regulation, planning, and/or economic development).
- Brings together those with authority and influence to solve problems.
- Uses a voluntary approach while leveraging current state and federal programs.

GET STARTED:

Select Your Stage of Collaboration or Skip to Specific Resources

Considering a Collaborative Effort

Forming a New Collaborative

Advancing a Developing Collaborative

Maintaining a Collaborative

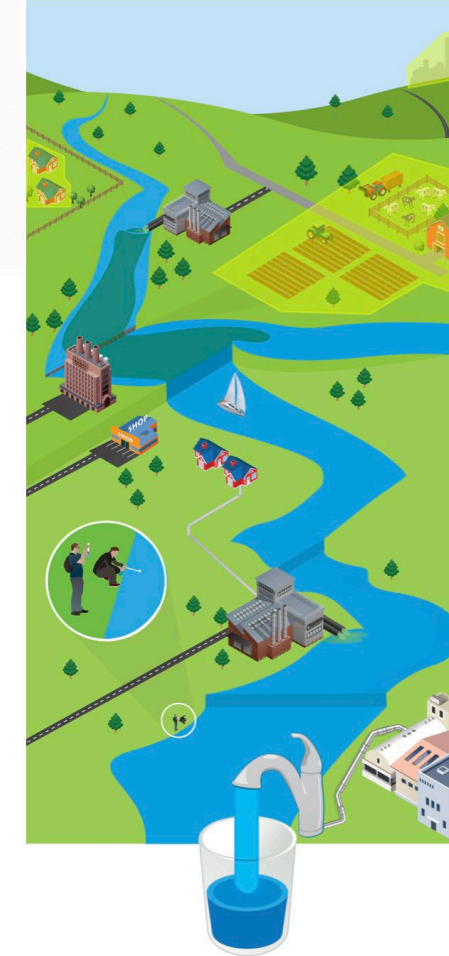
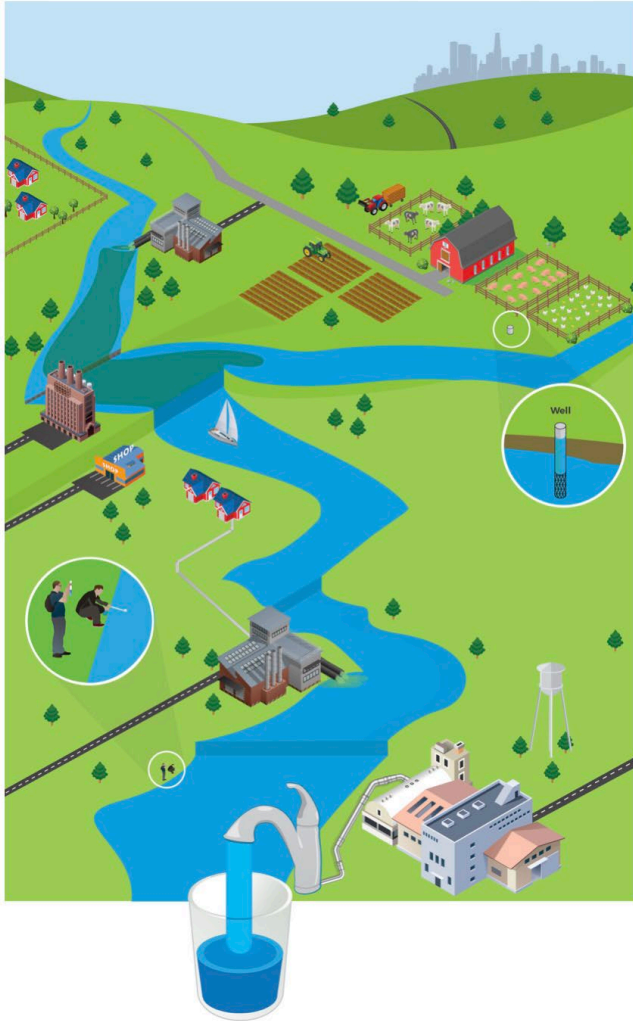
SEARCH A MAP OF COLLABORATIVE EFFORTS

Click Here

RESOURCES

- Funding
- Partners
- Communication
- Collaborative Structure
- Sample Materials
- Collaborative Approach
- Action Planning
- Measuring Impact

# From Source to Tap: How to Use the Clean Water Act to Protect Drinking Water



## NONPOINT SOURCE POLLUTION

### Section 319 Program

Agriculture and urban areas contribute pollution to surface and ground water through storm water runoff. Runoff pollution is a type of nonpoint source pollution, or pollution that cannot be attributed to a discrete point or single facility, and therefore isn't covered by the National Pollutant Discharge Elimination System (NPDES) permit program (see NPDES), which regulates point source pollution. The Clean Water Act Section 319 provides states, territories, and tribes with grant money to implement actions that protect against nonpoint source pollution (NPS).

What can I do to protect sources of drinking water? Participate in development of state Nonpoint Source Management Program Plans to:

- ✓ Share source water, water quality, pollution, and other watershed information to help states plan for source water protection in Nonpoint Source Management Plans and Watershed-Based Plans
- ✓ Present proposals to states for NPS projects that limit impacts of NPS pollution on downstream drinking water sources

[Learn More](#)

# Using Source Water Grants (SDWA 15% Set-Aside) to unlock 319 Nonpoint Source (CWA) Funding

A strategy to address groundwater impairments through an alternative to a 9-element plan

## Source Water Grant

A community opts to develop a Drinking Water Protection Management Plan using SWG funds



## Drinking Water Protection Management Plan

A DWPMP is completed, reviewed by DEE and submitted to EPA as an alternative 9-element watershed based plan



## EPA approval of DWPMP

The community is now eligible for CWA funding under 319



## CWA Projects Begin

Community submits their first project implementation plan (PIP), process continues as a 9-element plan





# FITS: Funding Integration Tool for Source Water

<https://www.epa.gov/sourcewaterprotection/fits>



Interactive module on EPA's website



Help navigating the funding landscape



One Stop Shop for major Federal funding sources



Cross-program planning considerations



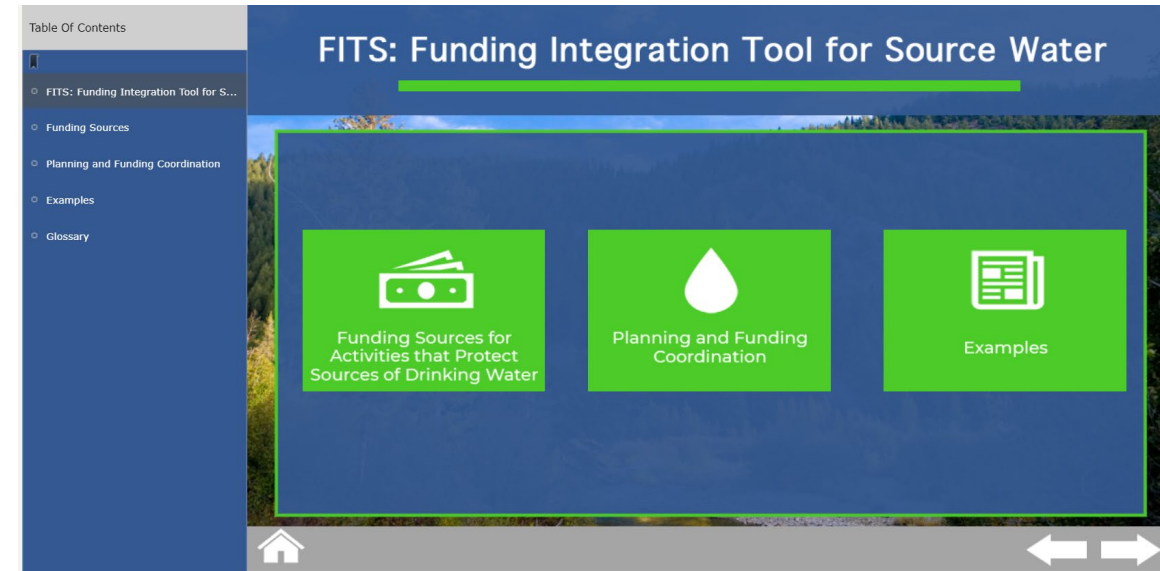
Tips for long-term planning



Rooted in real-world examples



Spirit of One Water



## 2018 Farm Bill Source Water Provision

Encourages practices for water quality and quantity that protect source water for drinking water ...while also benefitting agricultural producers

- Requires NRCS to work with community water systems and State Technical Committees to identify source water protection areas in each state (HUC12)
- Increases federal cost share for conservation practices that protect source water (up to 90%)
- Requires at least 10% of NRCS conservation funding be spent on SWP





# ASDWA AND GWPC ACTIONS

- ASDWA and GWPC work with our Source Water Committee, the state SWP coordinators, and the National Source Water Collaborative organizations to leverage 2018 Farm Bill opportunities.
  - **September 2021 Report and Fact Sheet** – “State Source Water Protection Programs: A Progress Report on Agriculture and Forestry Coordination Since the Passage of the 2018 Farm Bill”
  - **August 2021 Webinar with Kansas, Nebraska, and Wisconsin** – “Effective Agricultural Practices to Address Nitrate in Groundwater Sources of Drinking Water”
  - **2020 NRCS Regional Meetings** – Southeast, Central, and West

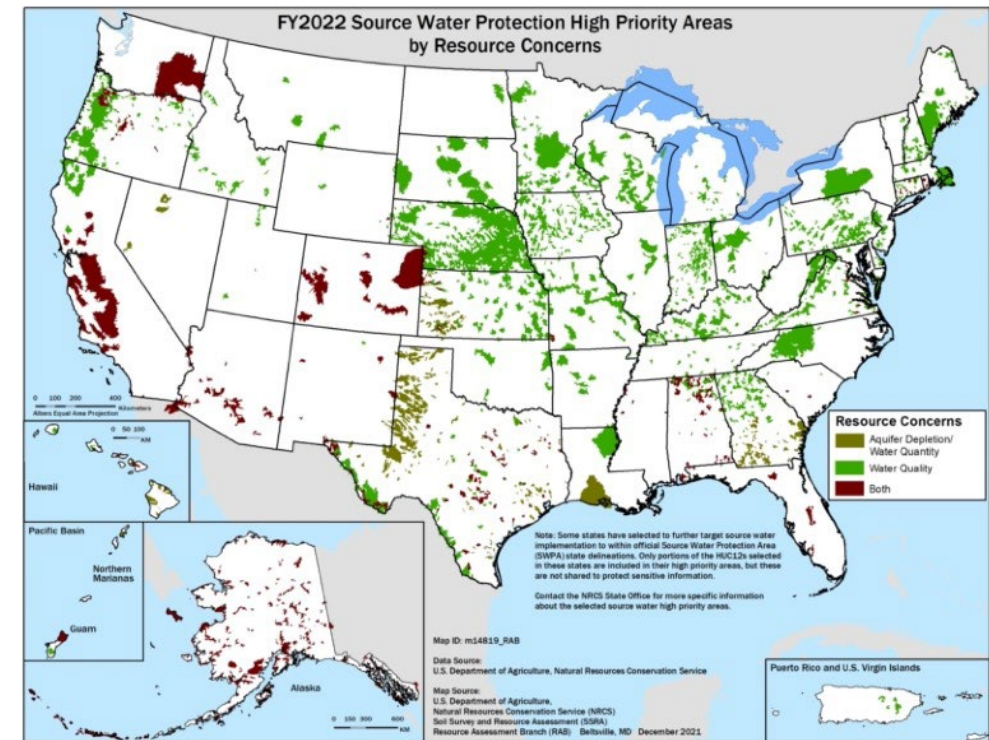
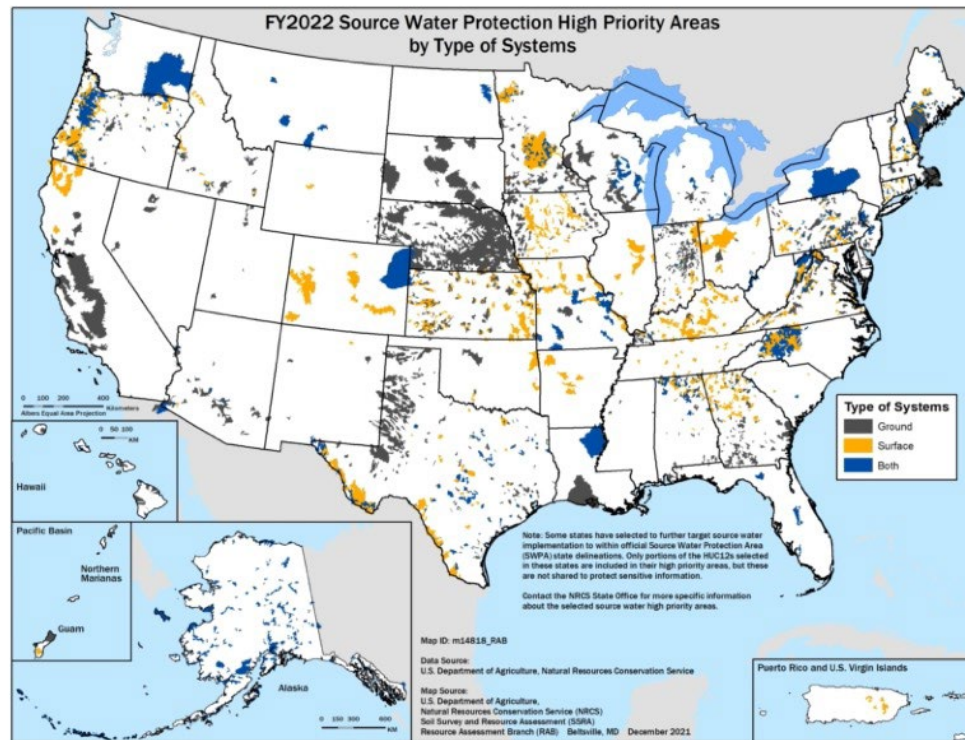
## State Source Water Protection Programs:

A PROGRESS REPORT ON AGRICULTURE AND FORESTRY  
COORDINATION SINCE THE PASSAGE OF THE 2018 FARM BILL

September 2021



# FY 2022 NRCS SOURCE WATER PROTECTION AREAS



# 2022 ACTIONS

- Source Water Collaborative
  - Clean Water Act 50<sup>th</sup> Anniversary
  - Infographic update, outreach and messages
  - Learning Exchange webinars
  - New website launch
  - Collaboratives Network
    - Virtual meetings; new collaboratives
  - 2023 Farm Bill Discussion Group
  - Nexus of Source Water and Energy Discussion Group
- ASDWA and GWPC
  - State information sharing
  - Coordination, meetings, and webinars
    - NRCS, and forest and conservation organizations

## Continued Needs

*Coordination with partners on the ground and with researchers to show and quantify results.*

*Messaging about the importance of protecting drinking water sources from nitrate in groundwater.*

*More partners, participation and projects!*

# State and Regional Contacts

## ***State Source Water Coordinators***

<https://www.asdwa.org/sourcewatercontacts/>

## ***Regional EPA Source Water Coordinators***

<https://www.epa.gov/sourcewaterprotection/source-water-contacts-epas-regional-offices>

## ***USDA/NRCS State Leadership***

<https://www.nrcs.usda.gov/wps/portal/nrcs/main/national/contact/states/>





# Source Water Protection Web Resources

- **Source Water Collaborative**

<https://sourcewatercollaborative.org/>

- **ASDWA Source Water Website**

<https://www.asdwa.org/source-water/>

- **EPA Source Water Protection Website**

<https://www.epa.gov/sourcewaterprotection>

- **EPA Funding Integration Tool for Source Water (FITS)**

<https://www.epa.gov/sourcewaterprotection/fits>

- **USDA Source Water Protection Website with National Source Water Priority Area Map**

<https://www.nrcs.usda.gov/wps/portal/nrcs/detail/national/programs/initiatives/?cid=nrcseprd1878227>

- **NASF State Forest Action Plans**

<https://www.stateforesters.org/forest-action-plans/>

- **AWWA Source Water Protection Website**

<https://www.awwa.org/Resources-Tools/Resource-Topics/Source-Water-Protection>



# Keep up with The Source Water Collaborative



WHERE  
SAFE WATER  
BEGINS



**sourcewater**  
COLLABORATIVE


**SourceWaterCollabora**  
@SourceWaterCol

29 National organizations united to protect America's sources of drinking water NOW to prevent contamination of the aquifers, lakes, rivers & streams we tap.


[sourcewatercollaborative.org](https://sourcewatercollaborative.org) Joined June 2015

316 Following 705 Followers

Edit profile

On Twitter  FOLLOW US

SourceWaterCollabora Retweeted  
Natural Resources Conservation Service  
@USDA\_NRCS  
USDA is seeking input on criteria to determine nonindustrial private forest land for program eligibility.  
[go.usa.gov/xACTb](https://go.usa.gov/xACTb)



SourceWaterCollabora  
@SourceWaterCol  
Check out our latest news: New Opportunity to apply for @NFWFnews Five Star & Urban Waters Restoration Grant Program. Approx \$1.5M for activities like local water quality, water quality monitoring, & #SourceWaterProtection plans. [sourcewatercollaborative.org/highlights/new...](https://sourcewatercollaborative.org/highlights/new...)

**Latest News**

**NEW OPPORTUNITY TO APPLY FOR NFWF FIVE STAR AND URBAN WATERS RESTORATION GRANT PROGRAM**

Posted on: December 10, 2020

The National Fish and Wildlife Foundation (NFWF) and the Wildlife Habitat Council (WHC), in cooperation with the U.S. Environmental Protection Agency (EPA), USDA Forest Service (USFS), U.S. Fish and Wildlife Service (USFWS), FedEx, Southern Company and BNSF Railway are soliciting (...) [Read More »](#)

[VIEW ALL NEWS](#)

**SIGN UP FOR EMAIL ALERTS**

Provide us with your email address and we'll notify you based on your preferences.

Email Address

[SEND](#)

**UPCOMING EVENTS**

[VIEW ALL EVENTS](#)

# Contact

*Sylvia Malm*

*Ground Water Protection Council  
(GWPC)*

[sylvia.malm2015@gmail.com](mailto:sylvia.malm2015@gmail.com)







## Logan M. Smith

Logan M. Smith is the Drinking Water Protection (DWP) program coordinator for the Kansas Department of Health & Environment (KDHE). Prior to accepting his current position, he was a hazardous waste permit writer for the Bureau of Waste Management at KDHE. Logan holds a Bachelor of Science in Earth Science and a Master of Science in Physical Science with a concentration in Earth Science; both from Emporia State University.





# Innovative Ways to Protecting Drinking Water in Kansas



## DWP Background



- **Drinking Water Protection (DWP) is a voluntary, non-regulatory program at KDHE**
- **Helps Small communities in KS to prevent nitrate contamination in respective Public Water Supply (PWS)**

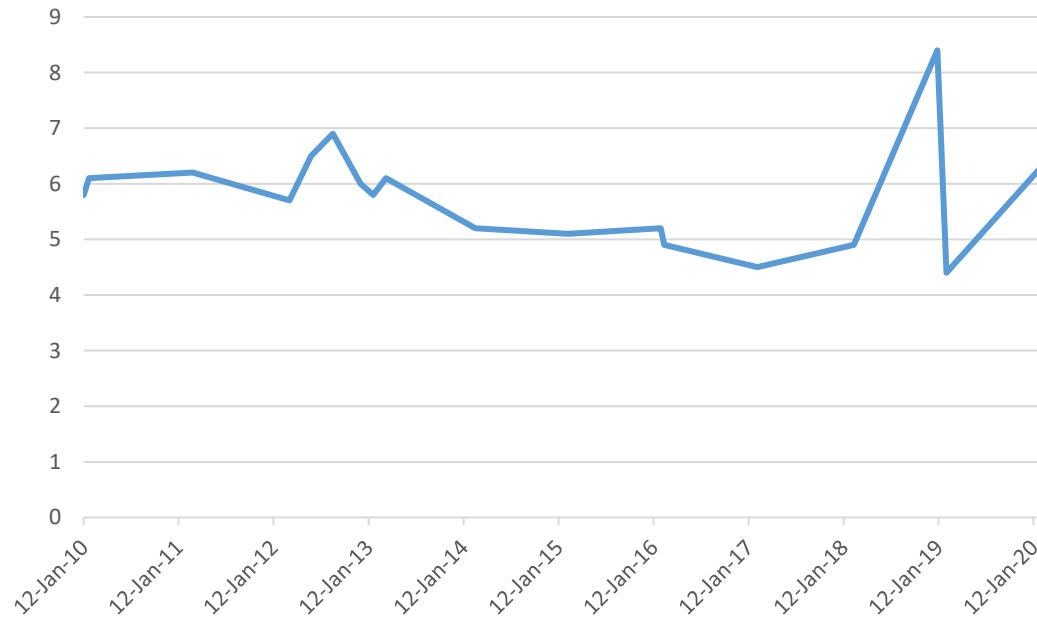


## How Communities Become Involved

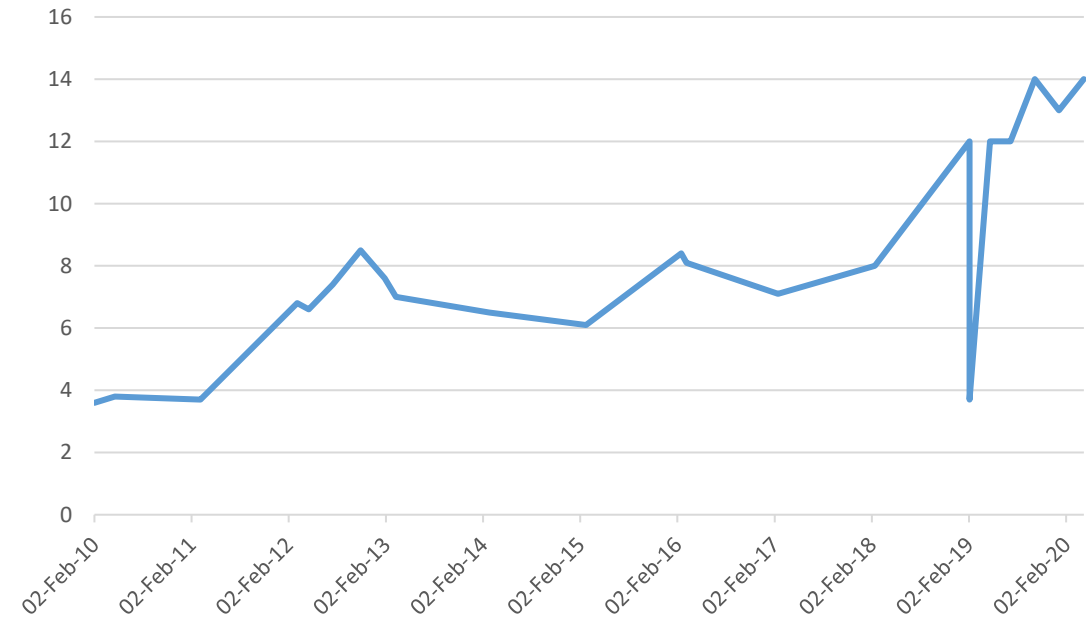
- **Behest of the Community**
  - **Concerned with rise in nitrate levels**
  - **Truly voluntary**
- **Consent Agreement**
  - **Through KDHE Public Water Supply**

# Innovative Ways to Protecting Drinking Water in Kansas

City of Dighton PWS - TP004

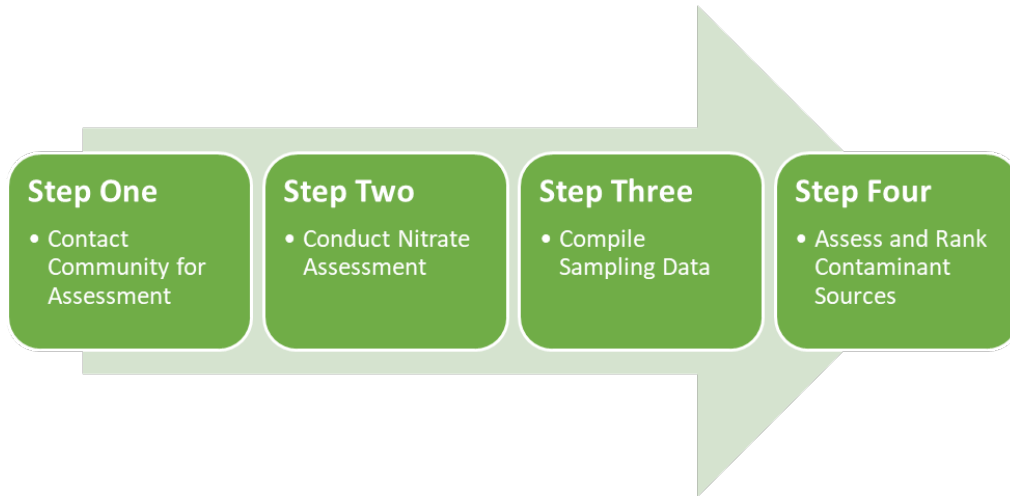


City of Copeland PWS - TP001



## DWP Process

### • Phase 1



### • Phase 2





## Assessment

- DWP hires third party contractor
- Collects nitrate samples from private water wells
- Compiles results into a Comprehensive Investigation Report
- Reviewed by DWP



## Commitment from Community

- DWP drafts Drinking Water Protection Report (DWPR) based on findings of assessment
- DWPR is presented to Community City Council
- City Council elects to continue with DWP
- Local Leadership Team (LLT)



## DWPP Developed

- Once LLT is formed, DWP drafts a Drinking Water Protection Plan (DWPP)
- DWPP outlines background, BMP Implementation, Implementation Cost, Funding Resources, Etc.
- DWPP will be approved by LLT and DWP





## Implementation

- Best Management Practices (BMPs)
  - Cropland
  - Rangeland/Grazing
  - Infrastructure
  - Wetland/Playa Restoration
- DWP provides Resources and Funding
- LLT helps gather I&E and gather community support



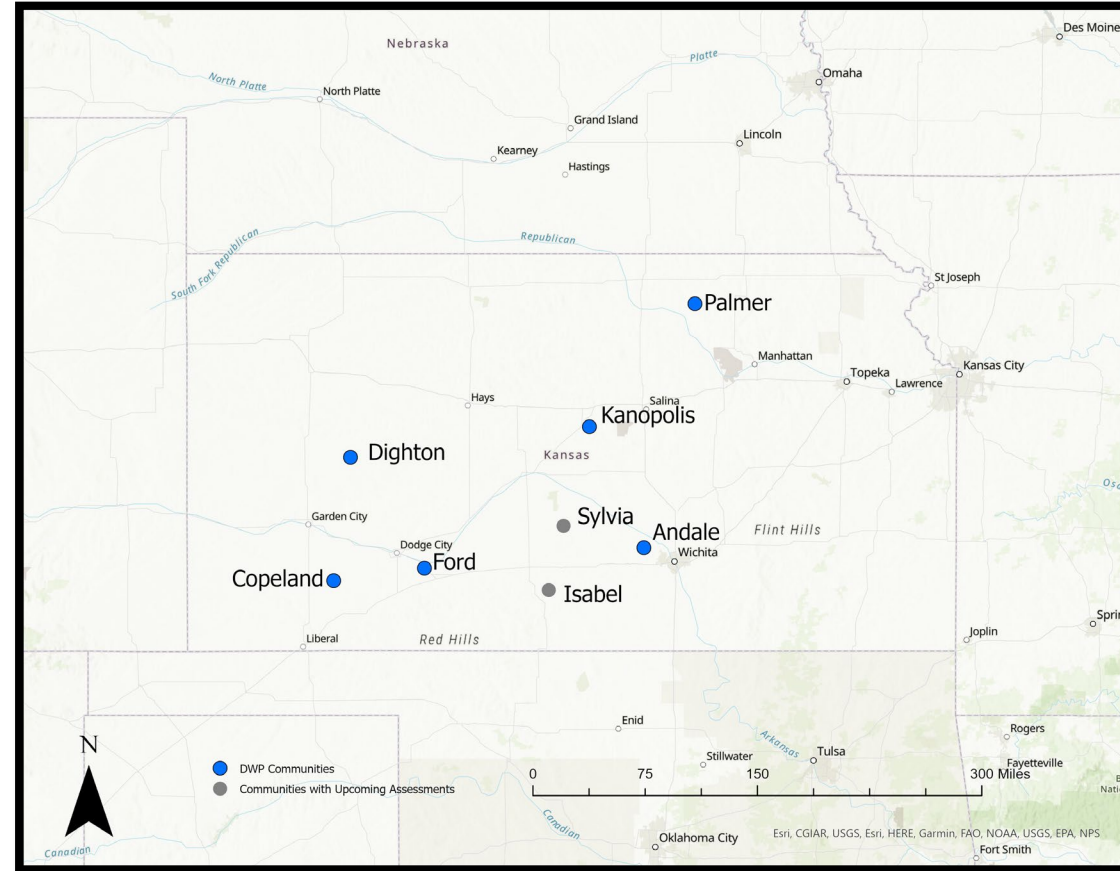
## Monitor, Evaluate, Update

- DWP will monitor PWS data
- Monitoring will allow DWP to test effectiveness of practices
- Reevaluate BMPs and target zones if needed





# DWP Communities



## Contact Info

- Logan M. Smith
- Drinking Water Protection Coordinator
- Watershed Management Section
- KDHE
- (785)296-2469
- [Logan.smith@ks.gov](mailto:Logan.smith@ks.gov)



## Thank you!





## Ruth Kline-Robach



Ruth Kline-Robach is an Outreach Specialist with the Michigan State University (MSU) Department of Community Sustainability, the MSU Institute of Water Research and MSU Extension. She has 30 years of experience in community-based water resources management issues and provides training and technical assistance related to wellhead protection, watershed planning, and stormwater management. Ruth works with state and local agencies and organizations to promote source water protection planning across Michigan.



# Source Water Protection Planning: Michigan's Approach

Ruth Kline-Robach

Michigan State University

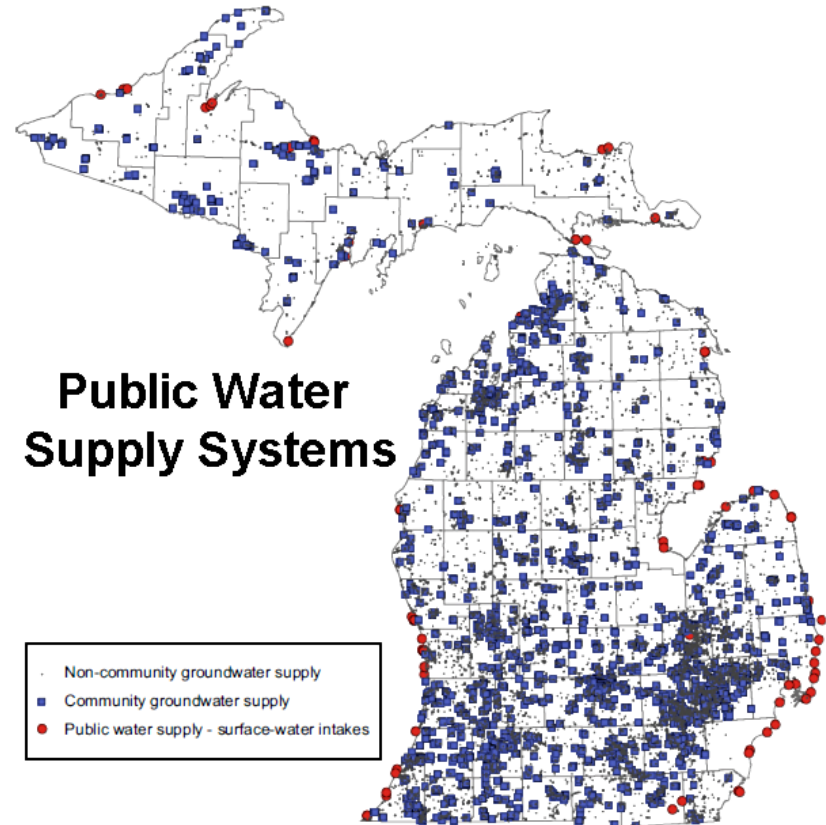
Department of Community Sustainability

Institute of Water Research

# MI Public Water Supplies

1,038 public water supply systems use groundwater (app. 400 are municipal systems)

70 public water supply systems use surface water





# Source Water Protection Programs



Protect public water supply systems from potential sources of contamination:

- **Wellhead Protection** Plans for groundwater supplies
- **Surface Water Intake Protection** Plans for surface water supplies

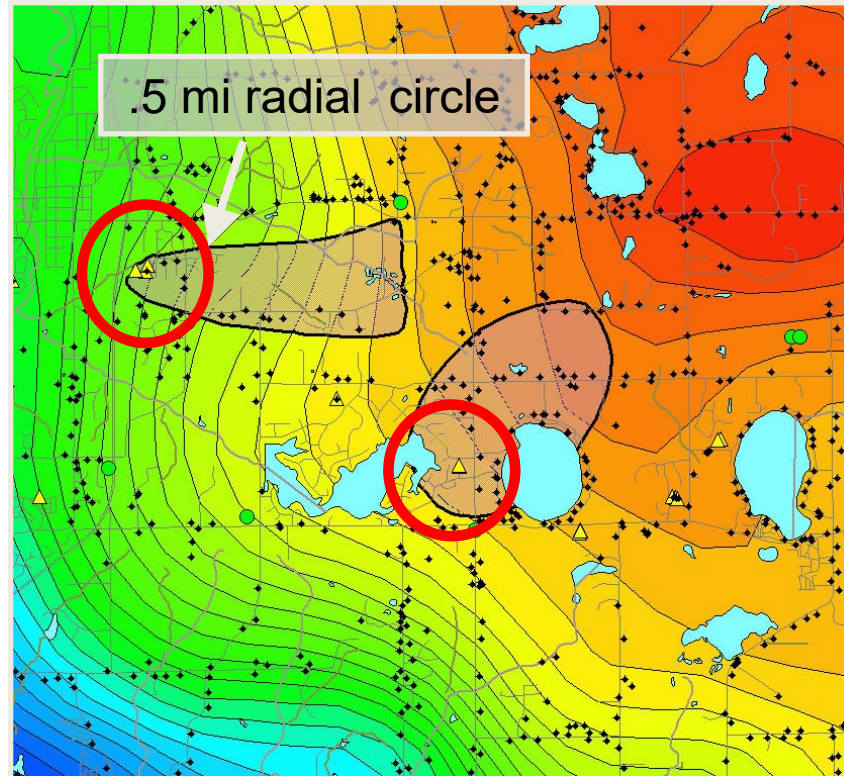
*Michigan's program is voluntary at the local level*

# SWP Program Elements

1. Roles and Duties (WHP Team)
- ➔ 2. Delineation of Wellhead Protection Area/Critical Assessment Zone
3. Contaminant Source Inventory
- ➔ 4. Management strategies
5. Contingency planning
6. Siting new wells/intakes
7. Education and outreach



## WHPA Delineations - 10-year Time of Travel is determined by groundwater flow direction and velocity



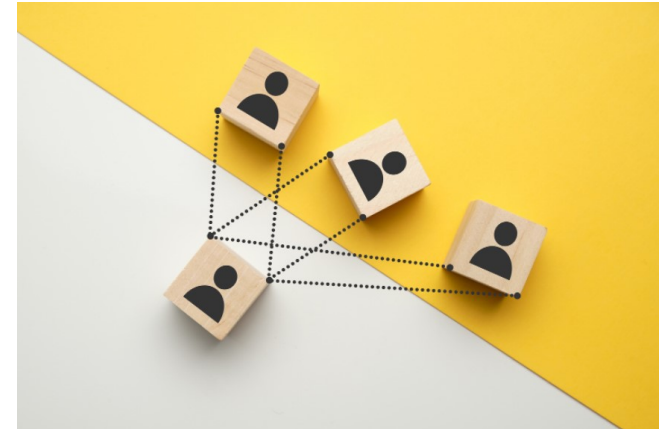
# Management strategies protect the source water from contamination

## *Examples:*

- Master Plan/Zoning Ordinances
- Site Plan Review Standards
- Environmental Permits Checklist
- Pollution Prevention Programs
- Plugging Abandoned Wells

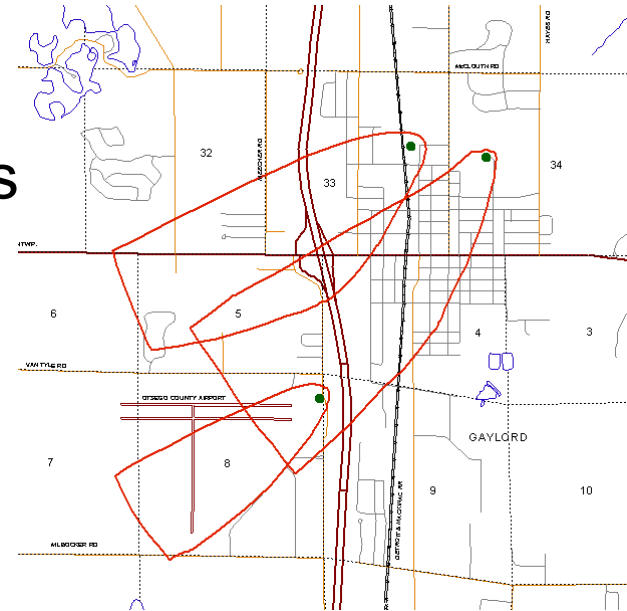


# What are the barriers to SWP planning?



# How does MI address these constraints?

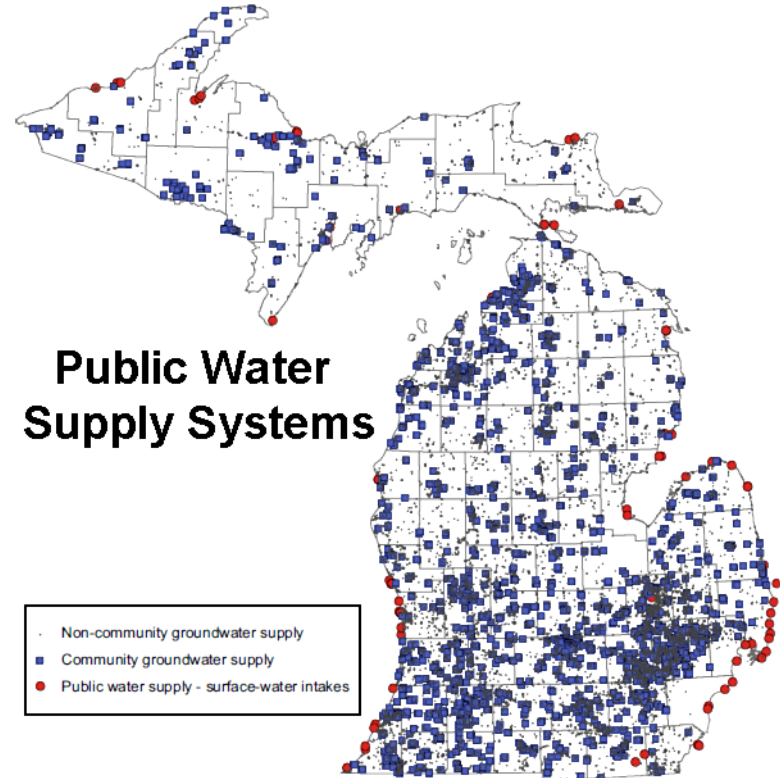
- 50% matching grant program (\$368K awarded in 2022)
- Providing Provisional WHPA delineations to groundwater systems – huge \$\$\$ savings to communities!
- Ongoing educational programs



# MI Approved SWP Programs

- 129 approved Wellhead Protection Plans (*many of our larger systems*)
- 14 Surface Water Intake Protection Programs

*SWP Programs must be renewed every six years*



# How can we encourage SWP planning?





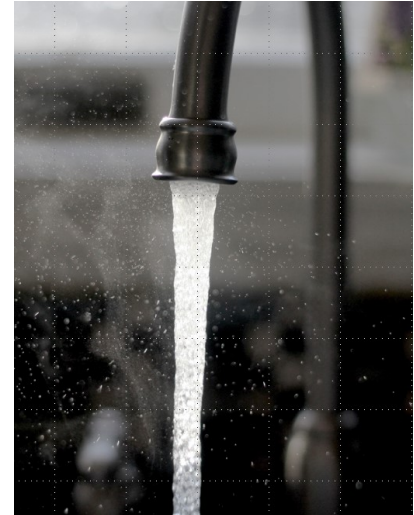
# Successful SWP planning requires partnerships

- State and local government
- Adjacent communities
- Business and industry
- Agriculture (NRCS, SCDs, MAEAP, local groups)
- Other programs (watershed planning efforts, stormwater permit programs, etc.)



# Incentives for SWP Planning

- Market the product in a positive way
- Ready to address emerging contaminants (e.g., PFAS)
- Overlap/synergy with other programs (e.g., MS4 stormwater permits)
- DWSRF Points
- Local control of the WHPA/CAZ
- Emergency Response
- Planning of New Wells
- Additional funding for farms located in WHPAs



# Benefits of Source Water Protection Planning

- Protect public water supplies
- Serve as a roadmap for community growth and new wells/intakes
- Acknowledge that clean water is vital for community sustainability



# Questions?

**Ruth Kline-Robach**  
**MSU Department of**  
**Community Sustainability and**  
**Institute of Water Research**  
[kliner@msu.edu](mailto:kliner@msu.edu)







## Question and Answer Session

We will draw initial questions and comments from those submitted via the chat box during the presentations.

### Today's Speakers

Sylvia Malm – [sylvia.malm2015@gmail.com](mailto:sylvia.malm2015@gmail.com)

Logan M. Smith – [logan.smith@ks.gov](mailto:logan.smith@ks.gov)

Ruth Kline-Robach – [kliner@msu.edu](mailto:kliner@msu.edu)





NORTH CENTRAL REGION  
WATER NETWORK

Thank you for participating in today's *The Current*!

Visit our website, [northcentralwater.org](http://northcentralwater.org), to access the recording and our webinar archive!

Two upcoming webinars from our soil health and climate teams:

**The Soil Health Matrix Decision Tool**

Wednesday, April 20<sup>th</sup> at 2pm CT

<https://soilhealthnexus.org/>

**Strength in Numbers: Assessing the Impact of New and Emerging Field Crop Diseases**

Monday, April 25<sup>th</sup> at 1pm CT

<https://northcentralclimate.org/webinars/>

Follow us:



Join our Listserv: [join-ncrwater@lists.wisc.edu](mailto:join-ncrwater@lists.wisc.edu)

[northcentralwater.org](http://northcentralwater.org)